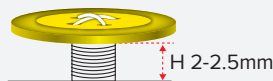
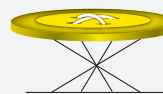
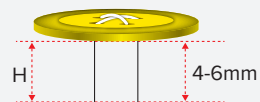
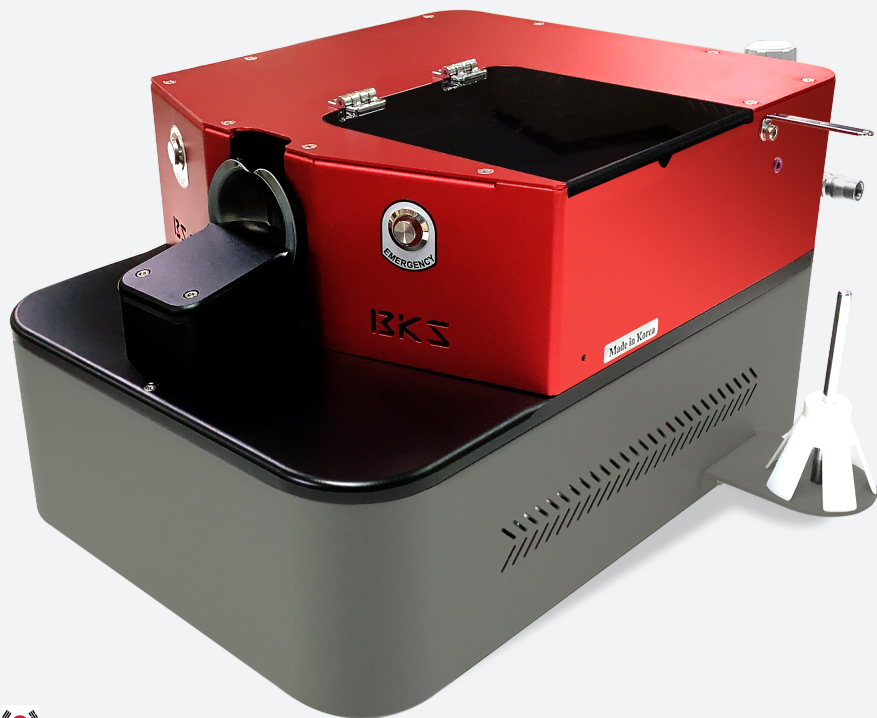


# BS-21 INDUSTRIAL SEWING MACHINE. BUTTON WRAPPING & KNOTTING MACHINE.



 MADE IN KOREA

## FUNCTIONS



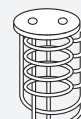
- One operation about 2.5sec
- Can set RPM Min 1500 ~ Max 3000
- Normal thread use
- Can knotting
- Can cutting
- Remaining thread about 3mm(shirts)
- Auto start
- Cylinder and valve Germany brand use
- Touch color screen

## SPECIFICATIONS

Dimension	470 x 360 x 280 mm
Gross Weight	12 kgs
Air Pressure	4~5 kg/cm
Power	Free Voltage 110V~240V
Cycle	Free cycle 50/60 Hz
Voltage Control System	In-Built SMPS

## APPLICATION

- The machine do wrapping and knotting after button stich work.
- Button hole keep original state without button hole expansion.



## FEATURES

- One operation takes about 2.5sec, it is 12 times wrapping based
- Using normal thread, easy color matching and cost of thread is cheap
- It can knotting like by hand
- Can set cutting on / off
- Remaining thread is under button, no need to cut by scissor again
- Push sliding type auto start, pushing a button is very important when operator using machine
- Cylinder and air valve are Germany brand, it is high quality mechanism and color touch screen

## SAKHO ENTERPRISES

No. 4,1st Floor, 1st Cross, 4th Block, SSI Area Rajajinagar,  
Bangalore-560010 India  
E-mail : sales@sakhogroup.com | Website: sakhogroup.com



Sales & Service By  
**SAKHO**



## BUKANGS

2F, 12, Saneop-ro, 7Beon-gil, Bucheon-si Gyeonggi-do,  
Korea Post Code-14441.  
E-mail : bukangs@naver.com | Website: bukangs.com